



26MM LAUNDRY TAG

GTag-PLU40



About GT&T Engineering

GT&T Engineering (Global Track & Trace) founded in 2003 is a regional market leader providing track and trace solutions using Global Positioning Systems (GPS), General Packet Radio Services (GPRS) / Global System for Mobile Communication (GSM) and Radio Frequency Identification (RFID) based wireless communication. We are one of the region's leading integrated manufacturers of Long Range, Ultra-High Frequency, Active RFID tags and readers.

With these RFID inventions, GT&T's technology is used in a broad range of RFID applications worldwide including transport management, routing & scheduling, fleet management & tracking, workforce management, personnel & asset management, facility system management, supply chain management, logistics, waste & environment control management, pharmaceutical and medical, secure trade and e-documentation.

GT&T's core competencies are:

- R&D efforts
- Consultancy
- Application Development

Worldwide offices:

- Australia
- China
- Europe
- Indonesia
- Malaysia
- Thailand
- USA

DESCRIPTION

GT&T Engineering's UHF Laundry Tag is compliant with the EPC Class 1 Gen 2. This product offers a user accessible memory of 96bits for UHF.

Designed for harsh environments such as garment tracking in laundries. Prior to delivery, transponders undergo complete functional and parametric testing, in order to provide the high quality that customers have come to expect from RFID Tag Systems.

The UHF Laundry Tag are well suited for a variety of applications including but not limited to: Laundry garment tracking, product authentication, & asset management which uses Philips U-code / Impinj Monza chipset.

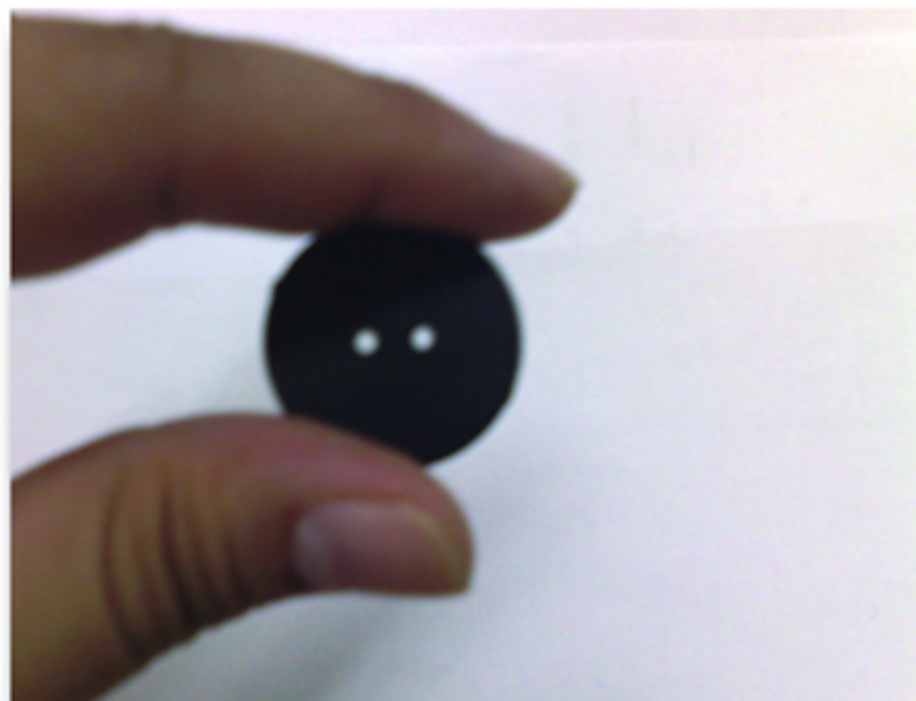
FEATURES

UHF:-

- Global: 860 - 960 MHz
- FCC: 902 - 928 MHz
- ETSI: 868 MHz
- Japan: 950 MHz
- Class 1 Gen 2 EPC Global

APPLICATIONS

- Laundry
- Product Authentication
- Asset Management





26MM LAUNDRY TAG

GTag-PLU40

SPECIFICATION

PART NUMBER	RFID-1088-A
Supported Standard	EPC Class 1 Gen 2 complaints
Resonance Frequency (at +25° C)	860MHz ~ 960MHz
Memory (user programmable)	*96 bits
Dimensions	**Ø 26 ± 0.2 mm x 3 ± 0.2 mm
Weight	2.3 ± 0.2 grams
Case Material	PPS / PC / ABS (comes with different colors)
Operating temperature	-25° C to +90° C
Storage temperature	-25° C to +100° C +160°C for total 30 seconds (PPS) +110°C for total 30 hours (PPS)
Vibration	10g, 10.2000Hz, 3 axis, 2.5h (PPS)
Mechanical Stability	Axial compression strength: 1000N (10s, static) (PPS) Radial compression strength: 500N (10s, static) (PPS) Isostatic water pressure: 45 bar (10h) (PPS)
Chemical Resistance	Typical chemicals used in laundry and dry-cleaning processes
Delivery	1000 units in bulk
Mechanical Shock	100g, 6ms, 6 axis, 20 times per axis (PPS)

* Subjected to inlay specification. It means it can be >96bits memory.

** Subjected to change for custom-made design.



GT&T Engineering Pte Ltd

2 Ang Mo Kio Street 64, #04-03B Econ Building, Singapore 569084

Tel: (+65) 6556 4112 Fax: (+65) 6556 4231 URL: www.gtteng.com

Email: sales@gtteng.com (Sales & General Information) & customerservice@gtteng.com (Customer Support)